



# Brampton Primary School

Date: 31/01/2022

Issue: 10 <http://brampton.newham.sch.uk>

Tel: 020 8472 0830

## Dates for your diary 2022

### Tuesday 1st February

- Buddhist Temple visit—Poland/Spain
- Discovery Centre visit—England/Wales

### Wednesday 2nd February

- Kensington Palace visit—Madagascar
- Science Museum visit—Namibia/S. Africa

### Thursday 3rd February

- Science Museum visit—Ghana/Zimbabwe
- Buddhist Temple visit—Belgium/Italy

### Friday 4th February

- Kensington Palace visit—Australia

### Monday 7th February

- Gurdwara visit—Poland/Spain

### Tuesday 8th February

- Virtual Dental Oral Health Workshop—Reception
- Gurdwara visit—Belgium/Italy
- Discovery Centre visit—Ireland/Scotland

### Thursday 10th February

- Kensington Palace visit—New Zealand

### Friday 11th February

- Kensington Palace visit—Japan



Dear Parents, Carers and Children,

### **Leading Parent Partnership Award (LPPA)**

The school was recently reassessed by Maureen Nash to see if the work we do with parents and families was of a sufficiently high standard to renew our award. I am pleased to say that she felt our evidence base was robust and she felt we were particularly strong in the following areas:

- supporting and involving parents is embedded in school practice,
- the wide range of strategies to help parents support children's learning, particularly during the pandemic,
- Communication strongly supports home-school links

Thank you to those parents who met with Maureen, she was very impressed with the information provided and how highly you spoke of the school. If you need our support or help in any way, please speak with us and we will be only too happy to help.

### **Parent Evenings – Wednesday 9<sup>th</sup> & Thursday 10<sup>th</sup> February**

Although we hoped parent evenings this term would be face to face with the lifting of many restrictions, we are experiencing very high numbers of positive cases, which has an impact on the running of the school. For that reason, we will continue to provide virtual meetings with your child's class teacher via Teams. Further information and links will be sent by the school office shortly.

### **World Hijab Day – Tuesday 1<sup>st</sup> February**

This Tuesday is World Hijab Day. Tomorrow's assembly is helping to raise awareness and promote religious tolerance by telling the story of Nazma Khan, from New York. To help everyone develop an understanding of what it feels like to wear a hijab, she is asking any child, or adult, (non-hijabi Muslims and non-Muslims) to experience the hijab by wearing one on this day. We look forward to seeing a range of hijabs around the school tomorrow.

### **SATS Information Parent Meetings**

This is a reminder that with the KS2 SATs coming up in May, Ms Baillie will be hosting a parent information meeting today (Monday 5:00 - 5:45pm, and Tuesday 7:45 – 8:30am, during which she will explain how you can best help your child prepare for the tests, and answer any questions you might have. These meetings are really important because the more you can do now to support and prepare your child, the more relaxed and confident they will be when May arrives. If your child is in Year 6, please follow Ms Baillie's link to the meeting.

It looks like it is going to be a lovely week so get outside to the park, go for a walk, or sit in the sun (when it is out) and read a book.

Kevin Reid  
Headteacher

## **Big Talk Home Learning**

If children can't say it then children can't write it.

Dear All,

This weekend's BTHL 28<sup>th</sup> / 29<sup>th</sup> / 30<sup>th</sup> January

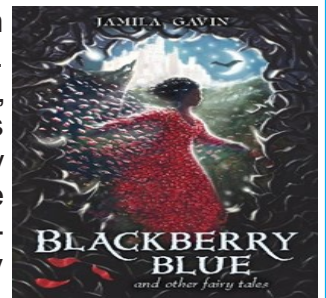
This week, in our assembly time, we were thinking about children's rights and what we can do to ensure that they are respected around the world.

What makes rights so powerful?



## News from Upper Phase —Year 6

Reflecting on the autumn term, the Year 6 children persevered well with their learning, by focusing on developing their independent writing skills. They have written a wide variety of fiction and non-fiction pieces this year, including suspenseful narratives, diary entries, formal and informal letters and fact files. This half-term, the children will be looking at traditional fairy tales and will continue to draft and write fictional narrative pieces, while ensuring to include dialogue and other aspects of grammar and punctuation that demonstrate the progress they have made throughout primary school.



Reading is an excellent resource for writing and the children have already been engaging with books and other extracts to inspire their creative thinking. One of the key objectives for any reader is to infer accurately; this is an educated, well-informed guess that we make, or an opinion that we form, based on the information in the text, our own experiences in life and our experiences of story structure. While they are reading with you at home, try to ask them questions which encourage them to 'read between the lines'. You can also do some shared writing at home with your child and ask them to check their grammar, spelling and punctuation, using the fantastic resources in their reading record.



In mathematics, we have been seeking challenge and efficiency through solving problems across a wide range of topics. Firstly, we looked at ratio and how this concept can be used to deal with proportions and sharing. The year 6 children then moved onto looking at the relationship between ratios, percentages, decimals and fractions through creating journal entries. Currently, we have been solving fiercely complex murder mysteries through the medium of mathematical codes. We are looking at a brand new topic that the children have never dealt with in their primary education: algebra. We have studied the key vocabulary, observed patterns and also created algebraic expressions.

This term for science, the children will be looking at the classification of all living things. In particular, we will be looking at the classification system invented by Carl Linnaeus. Children will be asked to identify the features of living things, group and classify animals and plants and use Linnaeus' system to create further detailed groups. The children will then evaluate the classification systems used by scientists today and think about improving it.



Finally, this term we will be running boosters for the upcoming SATs tests in May. The aim of our booster sessions is to support our year 6 children in achieving the best that they possibly can. This is now, more important than ever due to the loss of learning time over the last two years. It is vital that your child turns up to the boosters to help them succeed and have a strong start to secondary school life. Children that are absent on more than two occasions will be replaced by other children on the waiting list.

### Birthdays in Year 6



Zain Ul Abideen  
Abdul-Rahim, Mohammed F





## Inclusion & Other information

### Specialist Education Support Service

#### Language, Communication and Interaction Service (LCIS)

Please call for advice and support  
Autism and developmental Language Disorder.

Early years team: 07966 233 460

School age team: 07422 078277

Email: [LCIS@newham.gov.uk](mailto:LCIS@newham.gov.uk)

#### Sensory Service

Please call for advice and support  
Hearing or multi-sensory Impairment:  
07970 997425

Vision impairment: 07866 858939

Email: [Sensoryservice@newham.gov.uk](mailto:Sensoryservice@newham.gov.uk)

Lines are open Monday to Friday 9.00 am to 4.00 pm. The teams aim to answer your email enquiry within 3 working days.

#### Complex Needs and Dyslexia (CNDS)

Please call for advice and support

Early years team: 07970 262407 or 07970 257513

School age team: 07970 257507

Email: [CNDS@newham.gov.uk](mailto:CNDS@newham.gov.uk)

## Other information

### Healthy Teeth in School

Brampton School Nursery Children & Parent Oral Health Engagement

Date: Monday 31st January 2022

Please choose to join either session at:

Time: 10.00am or 1.30pm

Location: Online via Microsoft Teams

In each 30 minute session the dental team will share helpful advice about looking after your child's teeth, including tooth brushing, reducing sugar in the diet and preventing tooth decay. As well as advice on accessing NHS Dental Services

We look forward to seeing you!



### Can you offer a dog a loving home?

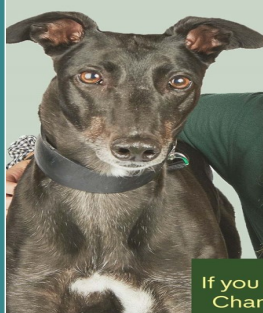


The heart-warming show The Dog House is returning and looking for applicants. Want to rescue a dog? Apply now!

<https://www.channel4.com/4viewers/takepart/the-dog-house>



### The Dog House is back!



Looking for your perfect pooch?

If you can offer a lifelong home to a rescue dog, Channel 4 want to hear from you! Apply here:

<https://www.channel4.com/4viewers/takepart/the-dog-house>







# Other Information



## Drum Works in Newham

### Drumming sessions for all ages

High-energy, great fun and very loud, our drumming groups offer a great way to blow off steam while learning new musical skills in a friendly, supportive environment.

### Wednesday Evenings

Family (age 3-6 with parents/carers)  
Juniors (age 7-11)  
Seniors (age 12-18)  
Adults (18+)

Chobham Academy,  
40 Cheering Lane,  
London E20 1BD

Stratford, 10-12 mins walk

### Further information

For timings, prices and term dates, visit: [drumworks.co.uk/newham](http://drumworks.co.uk/newham)

### Contact

[info@drumworks.co.uk](mailto:info@drumworks.co.uk)  
020 7382 5261  
[drumworks.co.uk](http://drumworks.co.uk)

@drum\_works  
@drum\_works



drum  
works

Ambition Aspire Achieve

## Boxing Club

FREE for all 10-14 year olds  
Terence Brown Arc in the Park  
Bethell Ave, E16 4JT

Saturdays  
12:30-2:30pm

To book your space call Jen on:  
07398 622 505  
Email: [Jen@theaazone.com](mailto:Jen@theaazone.com)  
or scan the QR code

[theaazone.com](http://theaazone.com) @theaazone.com @AmbitionAspireAchieve/

## School Lunch Menu - Week 2



# YOUR MENU @

## BRAMPTON JUNIOR SCHOOL

1<sup>st</sup> November 2021 to 1<sup>st</sup> April 2022

WEEK 2	Monday	Tuesday	Wednesday	Thursday	Friday
Main Choice	'New York' Style Chicken Meatballs with Penne Pasta	Jollof Rice served with Lamb & Vegetables	Roast Turkey served with Yorkshire Pudding & Roast Potatoes	Greek Style Souvlaki Chicken served with Rice	Fish in Batter served with Chips
Second Choice	Fish Finger & Pea Puree Wrap	Mexican Chicken Burrito	Spinach & Feta Whirl served with Roast Potatoes	Roast Vegetable Frittata with home-made Focaccia Slice	Jacket Potato served with Veggie Chilli
Extra Choice	Sweet Potato Macaroni Cheese with Focaccia	Sweet Carolina' Veggie Burger in Wholemeal Bun	Quorn Katsu Curry served with Coriander Rice	Tuscan Pasta Bake	Veggie Sausage Roll served with Jacket Wedges
Vegetable Selection	Fresh Broccoli Mixed Vegetables	Sweetcorn Fresh Carrots	Fresh Seasonal Vegetables	Sweetcorn Green Beans	Peas Baked Beans
Dessert of the Day	Frozen Yoghurt with Fruit	Raspberry Marble Cake with Custard	Chocolate Cheesecake	Lemon & Courgette Cake with Custard	Waffles with Fruit & Ice Cream
Daily Options	Salad Bar / Deli Options / Freshly Baked Bread / Fresh Fruit / Fruit Yoghurt / Cheese & Biscuits				

WEEK 2

Beginning: 8 Nov, 29 Nov, 20 Dec, 10 Jan, 31 Jan, 28 Feb, 21 Mar

Meat served at this school is Halal & non Halal

KEY:

PB - Plant Based

SS - Sugar Smart

ND - New Dish








DINEin

AND DISCOVER