



Reception 2023

Information Booklet



BRAMPTON PRIMARY SCHOOL

STARTING SCHOOL/RECEPTION CLASS 2023/2024

What happens when my child starts school?

Going to school full time for the first time is a very special event for both parents and children and you will want to be sure that your child is well prepared for the big day. The following information looks at some of the ways in which you can make starting school a satisfying and rewarding experience for your child.

Getting your child ready

Many children will already be aware that they are about to move to Reception, and may already be excited or nervous. If your child asks questions about what will happen, answer them in a positive, but honest way. You can also talk to them about what they would like to do at school; pass this information on to us in September and we will do our best to accommodate the children's wishes.

What if my child already attends Brampton?

Children already attending Brampton Nursery will visit their new classroom before the end of term, and meet their new teacher and nursery nurse. During this time the teacher will talk to them about some of the activities planned for the new term, as well as discussing rules and routines.



Meet the Team



Mrs Paven Kettory
Headteacher



Miss Stefanie Reay
Assistant Headteacher
for the EYFS and KS1



Miss Kirsty Tucker
Egypt Class Teacher
Year Group Leader



Mrs Rejwana Begum
Cameroon
Class Teacher



Miss Kolsuma Chadni
Morocco
Class Teacher



Mrs Sadia Shah
Tanzania
Class Teacher



Mrs Rehana Ahmed
Classroom
Practitioner



Mrs Yasmin
Begum
EYFS Classroom
Practitioner



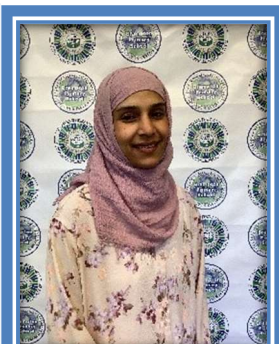
Mrs Assunta Di
Crosta-Low
Cameroon class
Nursery Nurse



Mrs Jaswint Kaur
Egypt class
Nursery Nurse



Miss Aaliyah
Chaudhry
Morocco class
Nursery Nurse



Mrs Salma Bosor
Tanzania class
Nursery Nurse

STARTING SCHOOL...in our Reception

We are delighted to be able to offer a Reception place to your child.

The school day

Your child will attend school every day from Monday to Friday from 9am until 3.15pm.



In the first week, your child will attend an 'induction session' either on Wednesday 6th September or Thursday 7th September or Friday 8th of September. During this session you and your child will meet their teacher and nursery nurse. You will have the chance to discuss any concerns you have and your child will have the chance to participate in some activities and a short story session.

This will be followed by an 'orientation day' with other children from their class. This will allow them more attention from the teacher and nursery nurse during the day and will help with settling in. This day will either be Monday 11th September, Tuesday 12th September, Wednesday 13th September, Thursday 14th September or Friday 15th September. Please bring your child directly to the class gate, which will be open from 9.00am. If you have any concerns about leaving your child, please speak to the class teacher.

All of the children will then start full time on Monday 18th September; we will be aiming to increase the children's independence, and so will expect them to line up in the playground at 8.55am.

When bringing your child to school, please arrive on time and be there in the playground punctually at the end of the day to collect them. The children will remain behind the fence until they are called forward by their teacher. The children will have been taught not to leave the teacher until they have heard their name being called by the teacher to ensure that children are never left unattended. Please be patient as this may take some time in the beginning.



Please ensure we know about your collection arrangements. **If someone different is picking your child up we need to be told at the beginning of the day.** If, for any reason, you are delayed please telephone the office on 020 8472 0830.

Make sure we have your contact names, numbers and addresses, so that we can always reach someone if your child is unwell or has an accident.

What are the arrangements at lunchtime?

Lunchtime takes place between 11.45am and 12.30pm. The children may go home for dinner, stay for school dinner or bring their own packed lunches. At the start of the year (for about the first six weeks), the children are accompanied to the lunch hall by their teacher and nursery nurse, who will help the children having school dinners to make a selection, and the children having packed lunch to open any packets. The nursery nurse will stay with the children in the dining hall. When the children have finished their lunch, they will play in the Early Years playground with their class nursery nurses to supervise. Later in the term, when the children have grown in confidence, they will join the KS1 children in the main playground. KS2 have a separate lunchtime and will not be in the playground at the same time as the Reception children.

If your child goes home for lunch please collect them from the school office at 11.45am. Please bring your child back to the office by 12.30pm where they will be taken back to class.

If you are providing your child with a packed lunch, these can be left on the packed lunch trolley outside the music room block when you come to school in the morning. Please ensure that lunch boxes are marked clearly with your child's name and class.

School meals are now free to all primary school children in Newham, and over 90% of our Reception children take advantage of this scheme, and enjoy a healthy, balanced midday meal each day at no cost. However, we would still encourage you to find out if your child is entitled to free school meals as, for every child that qualifies, the school can obtain additional funding that can be put towards funding resources such as extra teaching assistants.



Do I need to provide my child with snacks?

Children have free access to water and fruit throughout the day so there is no need to provide anything additional. If your child does want to bring their own drink, it must be water. We will not allow children to bring squash, juice or fizzy drinks into the classroom. Talk to your class teacher about any allergies your child may have.

Please do not place drinks bottles inside book bags, as they often leak, and destroy the reading books.

Early Years Foundation Stage Fund

We operate a Foundation Stage Fund which is payable at the start of each week. The cost is £0.50 per week and is voluntary. The money can be put in our money box each Monday. This fund allows us to provide extra activities for your child, e.g. fresh playdough each week, plants/bulbs for the garden, ingredients for food activities and additional healthy snacks.

What if my child does not settle immediately?

Some children take a little longer to settle than others, but all soon get used to their new routine. If, at any time, you are concerned, please make an appointment through the office to meet with your child's key person or see them informally before or after school. Usually children settle very quickly once their parent has left them and we are happy to give you a reassuring phone call to confirm this if you would like.



What is a Key Person?

Each child in Reception is allocated a 'Key Person' which means that they have a special named adult responsible for supporting them. Each member of staff is responsible for tracking, observing and maintaining a portfolio of work and photographs for a small number of children and these are their key children. We find that this helps children to settle well and feel secure in the Early Years Foundation Stage (EYFS) setting. You will find out who your child's key person is in September.

What if my child has medical needs?

When you complete your application, let us know of any medical needs your child may have and also talk to your class teacher. Mrs Rachon Corredera, our School Welfare Assistant, may need to complete a risk assessment or liaise with you about a care plan. Likewise if your child needs to take medicine while attending Reception, please contact Mrs Rachon Corredera.



What if my child has an accident during the school day?

Children may have accidents at school, if this happens then there are first aiders who will look after your child. If your child bumps their head during the day, you will be informed when you pick them up. If your child is injured in a way that may require a visit to the doctor or A&E, or becomes ill whilst at school, we will contact you immediately. We therefore ask that you provide us with up to date information regarding your emergency telephone numbers and addresses. If you cannot be contacted, and we feel that hospital treatment may be necessary, we would escort your child to hospital, whilst continuing to try and contact you.

Information about medicals and physical welfare

There may be occasional routine screening checks by the school nurse or the dentist. Your permission will be sought on each occasion and you will be informed if your child needs treatment. We may also ask for your permission for vaccinations. We will be happy to talk these through with you.

What are the school's child protection and safeguarding procedures?

The safety and wellbeing of your child is the responsibility of all of the adults at Brampton and of the utmost importance to us. All members of staff are trained in child protection and safeguarding every year. We have a duty to ensure that our children are not at risk of any kind of abuse. If we are concerned we will follow our child protection procedures. Mr Alex Wedgbury is our designated safeguarding lead (DSL). Staff members will talk through concerns with the DSL and parents will be asked to come into school to discuss the concern. Please talk to a member of staff regarding any concerns you may have regarding child protection.

The promotion of Fundamental British Values

Brampton Primary School is committed to promoting tolerance and mutual respect and as a result the school will:

- promote racial equality;
- promote good race relations;
- investigate any racial incidents;
- ensure that the children's education includes the opportunity to learn about, visit and listen to people from cultures and religions different from their own;
- ensure that the children's education promotes the children's spiritual, moral, social and cultural education.

Teaching of the Protected Characteristics

At Brampton, we believe that it is important that all children gain an understanding of the world they are growing up in. At Brampton, our children learn how to live alongside, and show respect for, a diverse range of people. To support this, we teach the protected characteristics, sensitively and in an age-appropriate way, by ensuring that role models and positive examples are interwoven into the books we use in class; our topics in assembly; images around our environment and in our discussions with children. We recognise our responsibility to provide a curriculum that is in line with the law and people's background, personal circumstances, cultural differences, values and beliefs are learnt about with a non-judgemental approach. Please speak to Mrs Hardie if you wish to find out more about how the curriculum at Brampton promotes the values of equality and respect.

A list of the protected characteristics can be found at:

<https://www.gov.uk/discrimination-your-rights>.

What should I do if I have a concern?

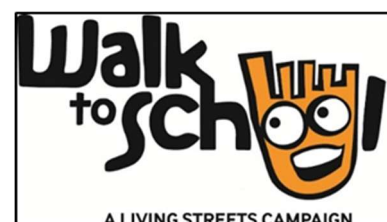
If you are concerned about an aspect of your child's development, please have the confidence to discuss this with your child's key person and the school's special educational needs department. There might also be a personal issue which you would like to discuss with our Child Protection Lead, Mr Wedgbury. Members of staff will be willing to talk to you at any reasonable time. Quick queries can be answered at the beginning or end of the school day, but please make an appointment if you need to discuss anything at length or confidentially away from your child.

Complaints procedure

The best way to sort out complaints is usually to talk the issue through with the class teacher or the key person. In cases of difficulty however, a member of the senior leadership team (SLT) would be happy to help you. If after speaking to a member of SLT you still have a concern, then contact the headteacher.

School Travel Plan

As a school, we promote and support families to take up a healthy lifestyle. Walking or riding a scooter/bike to school is good for your child's health, the environment and it helps to reduce pollution around the school. Therefore, we aim to encourage as many





parents as possible to allow their children to walk, scoot or cycle to school. There is cycle parking available next to the Creative Arts Hall. Children who ride to school or walk receive a badge monthly for promoting the school travel plan.

Heathy Schools Street

Please be aware that the school is situated in a Healthy Schools Street. This prohibits cars from driving into the zone between 8.30am to 9.30 am and again 2.45pm to 3.45pm.



Helping in class

Contact with parents is crucial and your support in the class is always welcome. We are always pleased to have the help of parents, which can be given in various ways, for example, by helping in the classroom; reading to the children or listening to them read; by helping accompany children on outings; helping with the garden area or by helping to maintain and organise

the resources in reception. We also appreciate parents being able to come into school and talk to the children about the jobs that they do.

The importance of promoting a love of reading

We are very lucky to have a library for our children. We visit the library each week and the children can also borrow a different book each week. If you are able to volunteer to join us in the library and help promote reading, please speak to your class teacher. We also recommend families join their local library and participate in the activities they run there, such as the Summer Reading Challenge.

In school, all children are given a reading record, in which the parents write down the reading that has taken place at home each day. Sharing books is a wonderful way to help your child learn to read and extend their vocabulary. We will send a book home with your child, please read



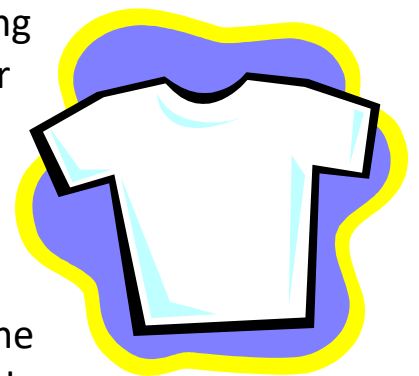
with your child for ten minutes every night. They will also be given access to a web-based reading program called Oxford Owl. Children will also bring home books related to their phonic learning when they reach the appropriate level.

You will have the opportunity to purchase a book bag; this is highly recommended for keeping the books that come home from school and the reading record in and also takes up less room on the corridor pegs than backpacks! Please look after school books as they are wonderful resource and we cannot use them if broken, ripped or scribbled in. Lost or damaged books will have to be paid for by families as we will need to replace the book.

What does my child need in order to be ready for school?

Uniform

Buying school uniform together and practising getting ready in the morning can be a good way to prepare your child for coming to school. The children will need black leggings or tracksuit/trouser bottoms, a white polo shirt, black shoes and a blue school jumper. Local supermarkets often sell packs of uniform at reasonable prices during the summer time. Also, you can buy the branded school logo uniform from the specialist uniform shop:



Fashion Stop

138 High Street North, East Ham, London, E66 2HT.

Email: info@fashionstopschoolwear.co.uk

Phone: 0208 552 3200

Opening times: Mon – Sat: 9.15am-6pm and Sun: 11am-4pm

School bags

Book bags with the school logo on are available from the first aid room at school or from the uniform shop. We also recommend using PE bags for PE kit, rather than backpacks, as it helps with safe storage in corridors.



Clothing

Staff will help with difficult fastenings, but please encourage your child to become independent in dressing themselves before they start school. This is particularly important for taking off, and putting on, coats, gloves and scarves. Sometimes young children have accidents, or forget to go to the toilet, so please supply your child with a bag containing a change of clothes, making sure all items of clothing (including coats) are labelled with your child's name. When choosing a coat for your child, it can be advantageous to choose a colour or a design that stands out. Sometimes children take off their coats in the lunch hall or in the playground; having a coat that stands out can help your child and the staff to find it if it goes missing!

Outdoor Play/Messy Play

Children will have free access to the Foundation Stage playground in all weathers. Please ensure that your child comes to school equipped for the weather conditions. For example, if rain is expected, children should bring a waterproof jacket and wellington boots (all named please). Children in the EYFS are encouraged to play

with many types of materials. These are often very messy. While every effort is made to protect children's clothing, we strongly recommend that children are dressed appropriately. We also recommend that parents keep their children's nails short – this helps with keeping hands clean and also reduces accidents when sharing toys and resources with the other children.

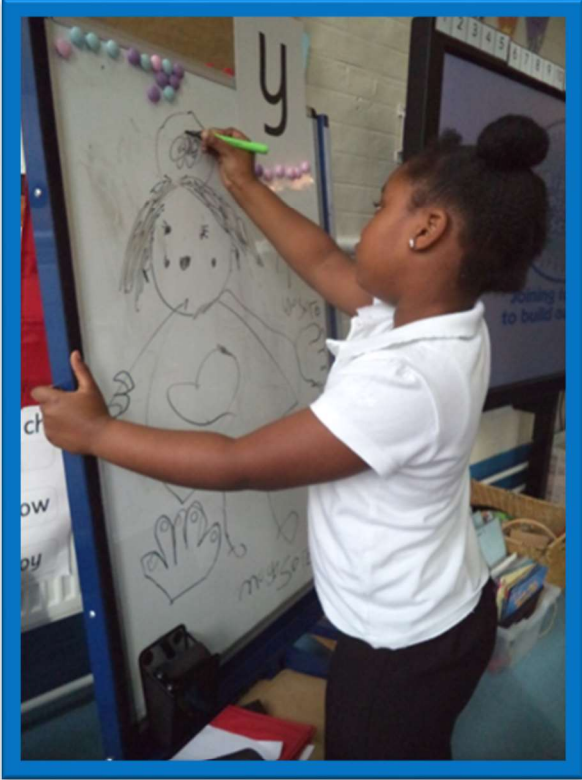
Jewellery

Children are not allowed to wear jewellery for school as it can be dangerous and causes upset if lost. Any jewellery being worn for school will be removed, put in an envelope and kept in the school safe. Ear studs and watches are permitted.

Personal belongings

We do not encourage your child to bring toys and other items of value or sentiment to school, unless requested by the teacher. They may get lost, broken, or damaged and if this happens the school cannot take responsibility for replacing them.







The Early Years Foundation Stage Curriculum

The Early Years Foundation Stage (EYFS) is the statutory framework that sets the standards that all Early Years providers must meet to ensure that children learn and develop well and are kept healthy and safe. It promotes teaching and learning to ensure children are ready for school and gives children the broad range of knowledge and skills that provide the right foundation for good future progress through school and life.

PRIME AREAS

There are three prime areas of learning and they are essential for children's healthy development. They are:

1) Communication and language: The development of children's spoken language underpins all seven areas of learning and development. Children's back-and-forth interactions from an early age form the foundations for language and cognitive development.

2) Physical development: Physical activity is vital in children's all-round development, enabling them to pursue happy, healthy and active lives. Gross and fine motor experiences develop incrementally throughout early childhood. By creating games and providing opportunities for play both indoors and outdoors, adults can support children to develop their core strength, stability, balance, spatial awareness, co-ordination and agility. Gross motor skills provide the foundation for developing healthy bodies and social and emotional well-being. Fine motor control and precision helps with hand-eye co-ordination which is later linked to early literacy.

3) Personal, social and emotional development: Children develop a positive sense of themselves and others; form positive relationships and develop respect for others; develop social skills and learn how to manage their feelings; understand appropriate behaviour and have confidence in their own abilities.

SPECIFIC AREAS

There are four specific areas of learning and they include the essential skills and knowledge children need to participate successfully in society. They are:

1) Literacy: It is crucial for children to develop a life-long love of reading. Reading consists of two dimensions: language comprehension and word reading. Language comprehension (necessary for both reading and writing) starts from birth. It only develops when adults talk with children about the world around them and the books (stories and non-fiction) they read with them, and enjoy rhymes, poems and songs together.

2) Mathematics: Developing a strong grounding in number is essential so that all children develop the necessary building blocks to excel mathematically. Children should be able to count confidently, develop a deep understanding of the numbers to 20, the relationships between them and the patterns within those numbers.

3) Understanding the world: Understanding the world involves guiding children to make sense of their physical world and their community. The frequency and range of children's personal experiences increases their knowledge and sense of the world around them.

4) Expressive arts and design: The development of children's artistic and cultural awareness supports their imagination and creativity. It is important that children have regular opportunities to engage with the arts, enabling them to explore and play with a wide range of media and materials.

CHARACTERISTICS OF EFFECTIVE LEARNING

The Unique Child reaches out to relate to people and things through the Characteristics of Effective Learning, which move through all areas of learning: playing and exploring, active learning, creating and thinking critically.



How will my child be taught to read and write?

The most important thing at this age is for children to enjoy listening to and talking about stories. Throughout the Reception year, children will bring home books for you to read to them. Your child can change their book every day.

When reading to your child you could:

- get them to tell you what is happening in the pictures;
- ask them questions about the story;
- talk about the characters;
- talk about what happens next;
- ask them to retell the story and
- discuss with them what part of the book they liked best.

At Brampton, we use a phonics programme called RWI: Read, Write, Inc. to teach our children how to read.

This tried and tested scheme has been successfully implemented at Brampton, and many other schools, both in Newham and throughout the country. Evidence shows that children in Reception learn to read and write more quickly using this scheme.

Initially, your child will be taught the sounds of the alphabet, and the skills needed to blend the sounds to read and segment the sounds to write.



When your child knows the sounds and has mastered the skill of blending, they will start bring home “Ditties” (short reading tasks) and then reading books. These books are intended for your child to read to you.

We aim to run training courses very soon to demonstrate the materials used in the teaching of phonics, and offer you the opportunity to purchase them for use at home. Look out for more details of this in September.

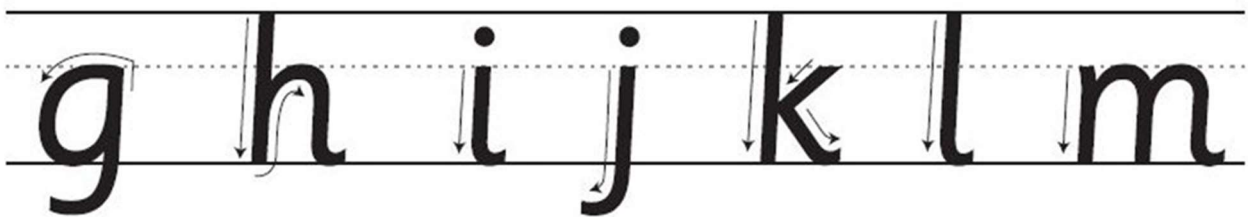
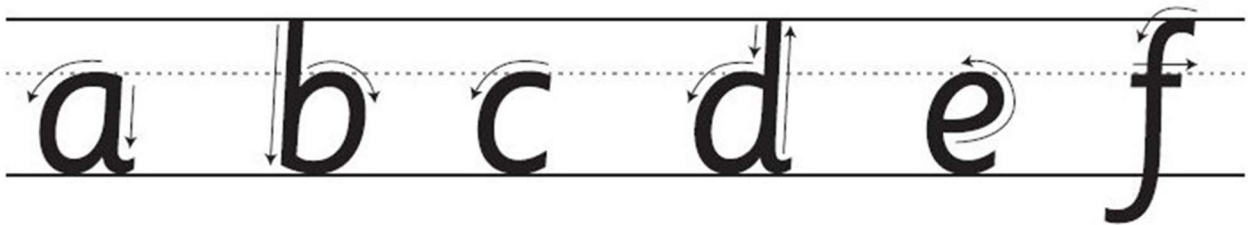
Handwriting

You will find below an example of the school's handwriting style. Children will learn to form letters as they are introduced to new sounds.

It is essential that children learn to form their letters correctly right from the start and we appreciate your support with this.

Please encourage your child to practise lower case letters rather than capitals, and to start and end the formation of each letter in the correct place.

Over the summer, encourage your child to write their name on a drawing created for their new teacher.



What can I do to support my child's learning at home?

- **One of the most important things at this age is that children are listened to and encouraged to talk.** Reading stories, singing nursery rhymes and counting songs are very valuable in developing the skills they will need as they progress through school.
- **Also developing children's confidence and self-esteem can be supported at home.** Encourage your child to dress themselves, tidy-up after themselves and help you with some simple tasks.
- **Talking about numbers, shapes and patterns in the environment** will help your child as they develop a mathematical awareness.
- **Valuing the marks that your child makes is also very important.** Talking about these marks as their early attempts at writing will encourage your child to want to write more.
- When your child is ready to write recognisable letters, please encourage them to write **the lower case letters and use the letter sounds (phonics)**, rather than saying the letter names and writing capital letters.
- ***Make reading a priority.***
In a calm, quiet place spend time looking at books - read, talk and sing together.
- **Finally make learning fun for you and your child!!!**

Activities for Parents and the Under Fives

At Brampton Primary School we want to be an integral and valued part of our community. To achieve this, we offer a range of activities such as Coffee Mornings for parents, ESOL English classes, toddler / baby groups and much, much more...

If there is something you would like us to offer, **please speak to Patrick Stewart or our PTA Chair about becoming involved and supporting your school.**

Useful Websites for young children

The internet is an amazing resource, but please consider how your child is accessing information online...*are they safe?*

Top tips:

- Be aware of what your child is doing on the internet.
- Make sure your child is supervised and that your PC, laptop, tablet or phone is ONLY used within view of an adult.
- Monitor your child's internet use and engage in what they are doing. Talk to them about what they are playing and ask questions.

Here are some safe, child friendly websites:

<https://www.bbc.co.uk/bitesize/primary>

www.topmarks.co.uk

[Nursery Rhymes and Songs - A to Z - BBC Teach](#)

<https://www.teachyourmonstertoread.com>



Contact us:

BRAMPTON PRIMARY SCHOOL

Brampton Rd,

East Ham,

London, E6 3LB.

Tel: 020 8472 0830

Email: info@brampton.newham.sch.uk

Please look at our school website for up to date information about term dates, staffing, newsletters and much, much more.....

Welcome

Welcome to our website. I am delighted to be the head teacher of this wonderful school, situated in the culturally and ethnically diverse district of East Ham, Newham. We are a large, inclusive school where difference is celebrated and consideration for one another promoted.

[Read more](#)



www.brampton.newham.sch.uk