



**Year 2  
Autumn 1  
Parents and Carers Curriculum Meeting**

---

Key Information and Dates

---

**Please make sure you  
have signed in.**

# Who is working in Year 2?

## Belgium:

Ms Zainab Iqbal

## Italy:

Ms Faatimah Ahmed

## Spain:

Ms Amina Begum

## Poland:

Ms Tahmina Choudhury

## Classroom Practitioner:

Ms Toni Cable

## Year Group Leader:

Ms Zainab Iqbal

## Phase Leader:

Ms Stefanie Reay





# A Typical Day

---

## Mornings

- 8:45 - Soft Start (*Registers Close - 9:00*)
- 9:00 - Arithmetic/Handwriting/Library
- 9:30 - English
- 10:30 - Break
- 10:45 - Maths
- 11:45 - Lunch

## Afternoons

- 12.30 - Afternoon Registration and Assembly
- 12.45 - Take One Book
- 13:30 - Foundation subjects
- 14:15 - Foundation subjects
- 15.00 - Story
- 15.15 - Home time

**Our PPA Day will usually be on Wednesday**

# PPA (Specialist Teachers)

---



Mr Gillingham - Art

Ms Valverde - Spanish

Mr Kai - PE

Ms Calver - History  
and Geography

# Autumn 1 Theme: Wonders of the World

## Big Question: What makes London wonderful?



### Rights Respecting Schools

Children's rights are learned, taught, practised, respected, protected and promoted.



### Personal Development

SMSC - spiritual, moral, social and cultural development.

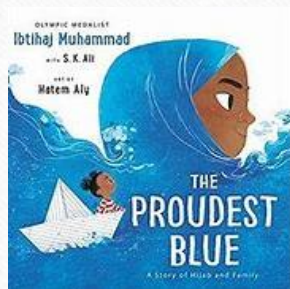


### Fundamental British Values

Democracy, individual liberty, rule of law, mutual respect and tolerance of different faiths and beliefs.

# English Texts

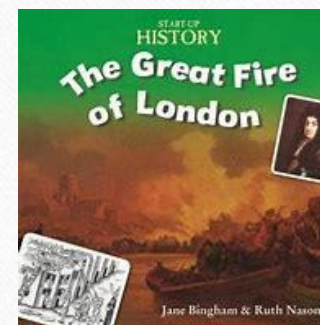
- English Lessons
- The Proudest Blue by Ibtihaj Muhammad



- Amazing Grace by Mary Hoffman



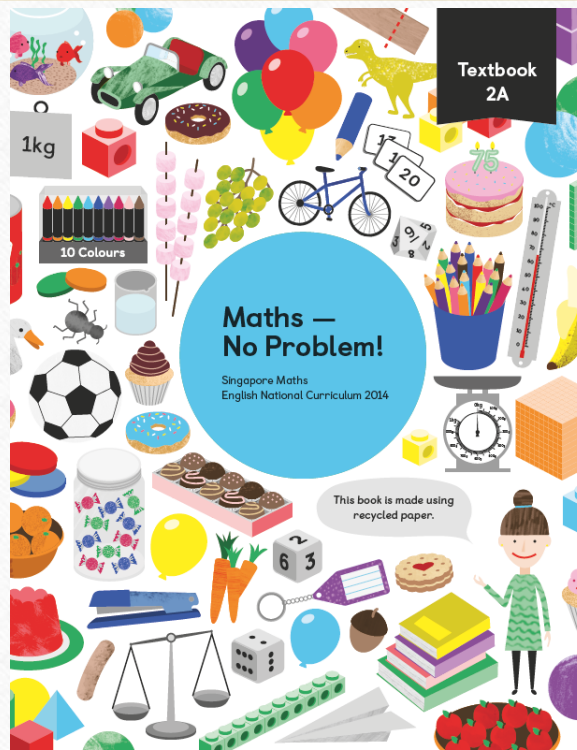
- Phonics/Take One Book
- The Great Fire Of London





# Maths

- Mastering Number
- Numbers to 100
- Place value
- Addition and Subtraction
- Multiplication (2,5 and 10)



- Explore:**  
Includes questions related to various lesson objectives as an introductory activity for pupils.
- Master:**  
Introduces new concepts through a C-P-A approach with the use of engaging pictures and manipulatives.
- Guided Practice:**  
Children work with a partner for further consolidation of concepts.
- Independent:**  
Children work through questions independently applying skills taught during the lesson.

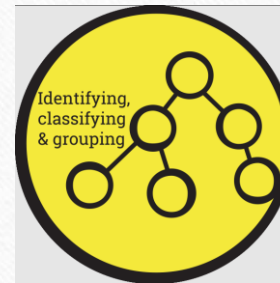


# Science – Living Things and Their Habitats



## Working scientifically skills:

- Explore and compare the differences between things that are living, dead, and things that have never been alive.
- Identify that most living things live in habitats to which they are suited and describe how different habitats provide for the basic needs of different kinds of animals and plants, and how they depend on each other.
- Identify and name a variety of plants and animals in their habitats, including micro-habitats.

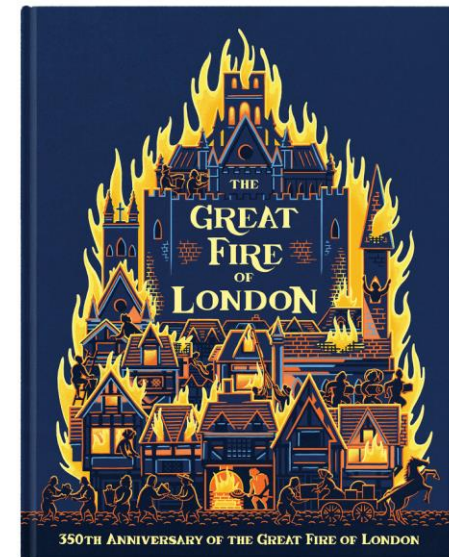




# History

---

- identify similarities and differences between ways of life in different periods.
- Learn about events beyond their living memory (The Great Fire of London).





# Art and Design

- ***Kapow Scheme of Work***
- Drawing: Tell a story
- Charcoal mark making
- Creating texture
- My toy story
- Creating characters
- Tell a story





# Design and Technology

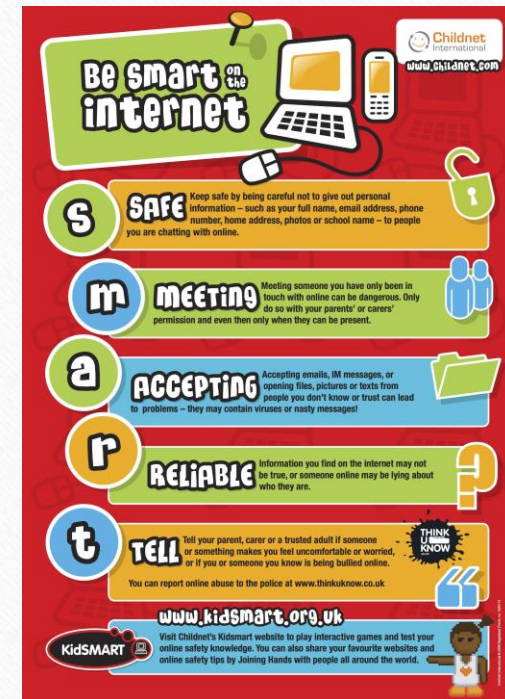
- Kapow Scheme of work
- Baby Bear's Chair
- Exploring stability
- Strengthening material
- Making Baby Bear's chair
- Fixing and testing Baby Bear's chair





# Computing

- Discussion and reminders on Online Safety
- ***NCCE Scheme of Work***
- Computing systems and networks - IT around us



# PSHE



- Topic: Being me in my world
- Hopes and fears for the year ahead - children talk about feeling worried and recognising when they should ask for help and who to ask.
- Rights and responsibilities; how to work collaboratively, how to listen to each other and how to make their classroom a safe and fair place.
- Choices and the consequences of making different choices.
- Parents and carers can find copies of the letters regarding the PSHE curriculum, and about the books used in PSHE Read Aloud, on the school website.



# Religious Education (RE)

---

- **Big Question:** What can we learn from special stories
- **Where did the world come from? How should we look after it?**
- The children will be taught to:
- Retell two creation stories
- Explain what a Christian, Muslim, Jewish and a Hindu person would understand from their creation story.
- Compare their views with other people's suggestions about how the world was created.





# Spanish

- Myself – me and my world

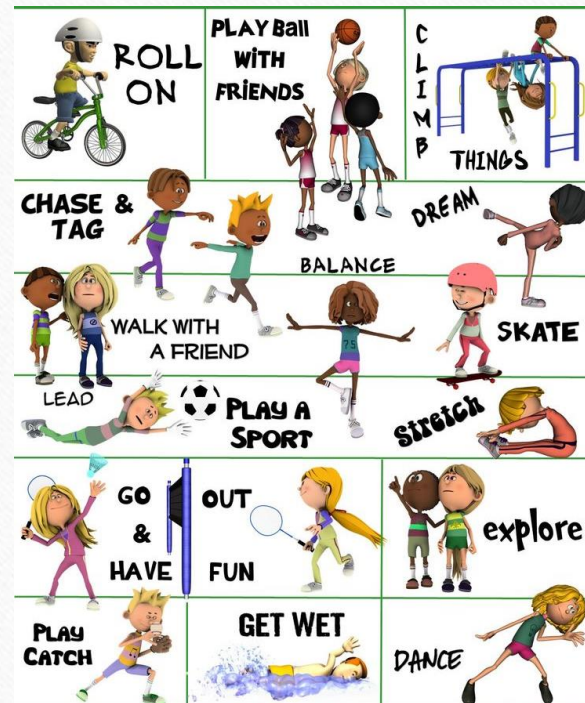






# Physical Education

- PE Days - Tuesday and Wednesday
- Practising our jumping skills and learning how to use our hands.





# Music

- Carnival of the Animals





# Key Events Coming Up This Year...

---

## Educational Visit

- Horniman Museum - Dates to be confirmed
  
- Y2 SATs



# Behaviour & Expectations

---

- Punctuality and attendance are crucial - lessons start at 9:00am - remember soft start begins from 8:45am so families can arrive at school from this time.
- Safeguarding: Please do let the teacher know if your child has had an accident or has a mark or bruise. Please do not be offended when we ask about them.
- We expect pupils to make the most of every lesson - focus and attention are key (and we ensure the lessons are enjoyable and memorable).
- Please download the **MyEd App**. If you have concerns about attendance, please speak to Mr. Wedgbury or Mrs Tshuma.



# Home Learning

---

- Each child should read at home every day for at least 10-15 minutes. **They** record this at least 5x a week in the reading records.
- The children will bring home their RWI spelling log book that contains spellings that the individual child needs to rehearse (words that the child is struggling with).
- 10 spellings will be sent home each week from the National Curriculum based on the child's current level. They will be tested on these spellings in the following week.
- Online Times Tables Rock Stars (TTRS) activities - *Focus on x2, x5 and x10*
- **Optional:** Half termly project based on the whole school theme for the half term and the year group 'big question'.



# Supporting Pupils at Home

---

- Please ensure that your child reads every evening (aim for 20 minutes). You can help by discussing the meaning of key words and asking questions about the book that your child is reading.
- Ensure that an adult has signed the child's reading record each day.
- Encourage your children to read a range of reading material - magazines, graphic novels, newspapers etc.
- Children also benefit from being read to.



# Brampton Behaviour Policy

---

- We use BPS points, good news notes and celebration assemblies to reinforce positive behaviours and good work.
- We use a learning zone system in class for behaviour - consequences for not following the school rules include time out in another classroom and a blue letter home.
- Very poor behaviour at break or lunchtime may result in pupils being given a behaviour reflection - missing some of their lunch break with a member of SLT.



# Class Worry Boxes

- Worry boxes provide a way for pupils to share any concerns or worries they have with their teacher - there is one in every classroom and these are checked regularly throughout the day.







# Uniform & PE Kit

---

## School Uniform

- Plain or school blue jumper, cardigan or fleece
- White school shirt, polo shirt or T-shirt
- Grey or black skirt, pinafore or trousers
- Blue and white checked dress
- White/navy blue/black headscarf
- Plain black shoes or trainers
- Black, grey or white socks or tights
- Preferably no jewellery - watch and stud earrings only
- An appropriate coat to keep your child warm and dry

## PE Kit

- No jewellery and no earrings (studs will need to be taped if kept in)
- Plain blue or school logo PE T-shirt
- Black trainers or plimsolls
- Black, grey or navy shorts in warm weather
- Plain black, grey or navy tracksuit bottoms in cold weather

*(Pupils should come to school in their PE kit on their PE days)*



# Home School Agreement

---

Please have a look at the new home school agreement leaflet.

Do let a member of the senior leadership team know if you have any queries or questions.



# Healthy Body, Healthy Mind

---

**Please provide your child with:**

- A water bottle - the children will have access to their bottle all day.
- A healthy packed lunch or request a school meal.

**Optional:**

- A healthy morning snack -a piece of fruit.
- EYFS and KS1 are provided with a piece of fruit each day.



# Key Dates for Autumn 1

---

- Tuesday 12<sup>th</sup> September - Parent and Carer Forum 9am and 5pm
- Thursday 19<sup>th</sup> October - Parent/Carer Learning Review Appointments
- Friday 20<sup>th</sup> October - Last Day of Term
- Monday 23<sup>rd</sup> October - Friday 27<sup>th</sup> October - Half Term
- Thursday 2<sup>nd</sup> November - Autumn 2 Curriculum Meeting



# Working Together

---

- The children make the best progress when there is a partnership between home and school, so...
  - Please support and reinforce the school's rules and expectations (behaviour, uniform, attitude etc.).
  - Do communicate any worries, queries, questions or concerns you might have - we want to help! First of all, please speak to your child's class teacher, then the year group leader and then a senior leader.
  - Email [info@brampton.newham.sch.uk](mailto:info@brampton.newham.sch.uk) or see a member of the senior leadership team.



# Volunteers

---

We are looking for parents and carers to volunteer to accompany classes on their educational visits.

We would like to create a bank of people who can be called on to support the school in ensuring all children are able to attend at least one educational visit each half term.

Parents and carers who are interested would be asked to complete a DBS as part of our safeguarding policy.



# Any Questions?

---