

Year 4
Autumn 2
Parents' and Carers' Curriculum
Meeting



Key Information and Dates

**Please make sure you
have signed in.**

Who is working in Year 4?

Ms R Qureshi

Year Group Leader

Bangladesh

Ms S Begum

China

Mr S Lambert

India

Ms H Kasu

Tibet





A Typical Day

Mornings

- 8:45 - Soft Start (*Registers Close - 9:00*)
- 9:00 - Maths
- 10:00 - English
- 11:00 - Assembly
- 11:15- Break
- 11:30 - Handwriting
- 12:00 - Take One Book
- 12:30 - LUNCH

Afternoons

- 13.15 - Science
- 14.15 - D&T
- 15.15 - Home time

Our PPA Day will usually be on Wednesday. This is when children will be taught a range of specialist subjects: geography/history, PE, art and design and Spanish.

PPA (Specialist Teachers)



Mr Gillingham - Art

Ms Valverde - Spanish

Mr Kai - PE

Ms Calver - History
and Geography

Autumn 2 Theme: Special People and Special Places



Big Question: Who were the Anglo Saxons and Scots?



Rights Respecting Schools

Children's rights are learned, taught, practised, respected, protected and promoted.



Personal Development

SMSC - spiritual, moral, social and cultural development.



Fundamental British Values

Democracy, individual liberty, rule of law, mutual respect and tolerance of different faiths and beliefs.



Maths

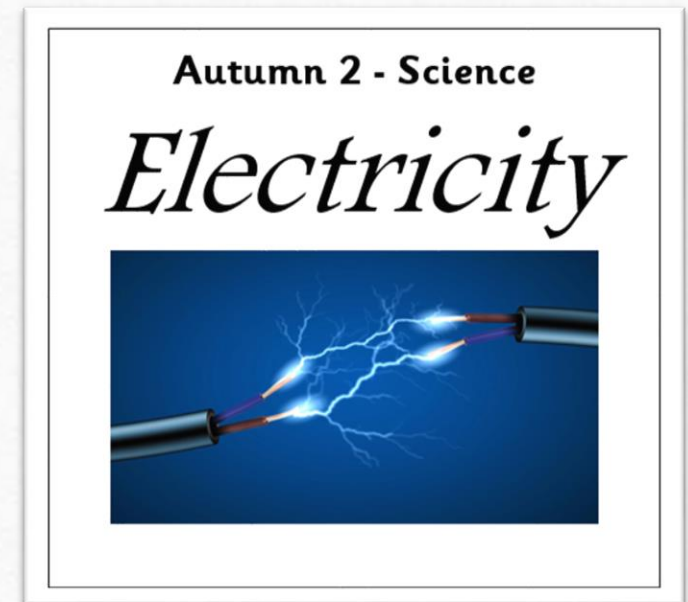
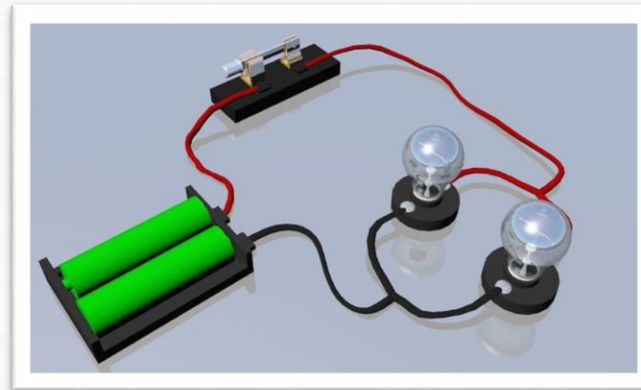
- Continue with Chapter 2 - Subtraction within 10 000
- Chapters 3 - Multiplication and Division
- Chapter 6 - Fractions
- Parent access





Science

- Electricity
- Exploration
- Compare
- Experiment





History

- Who were the Anglo Saxons and Scots?
- Settlement & Kingdoms
- Invasion
- Art & Culture
- Christian Conversion



Autumn 2- History

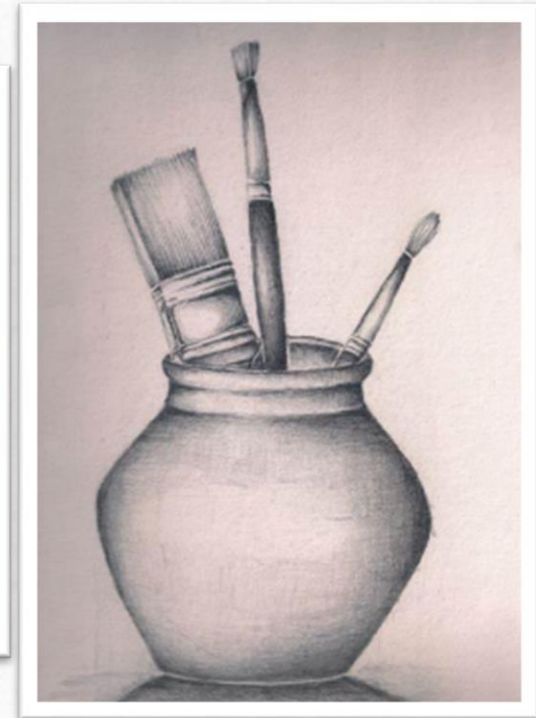
*Anglo
Saxons*





Art and Design

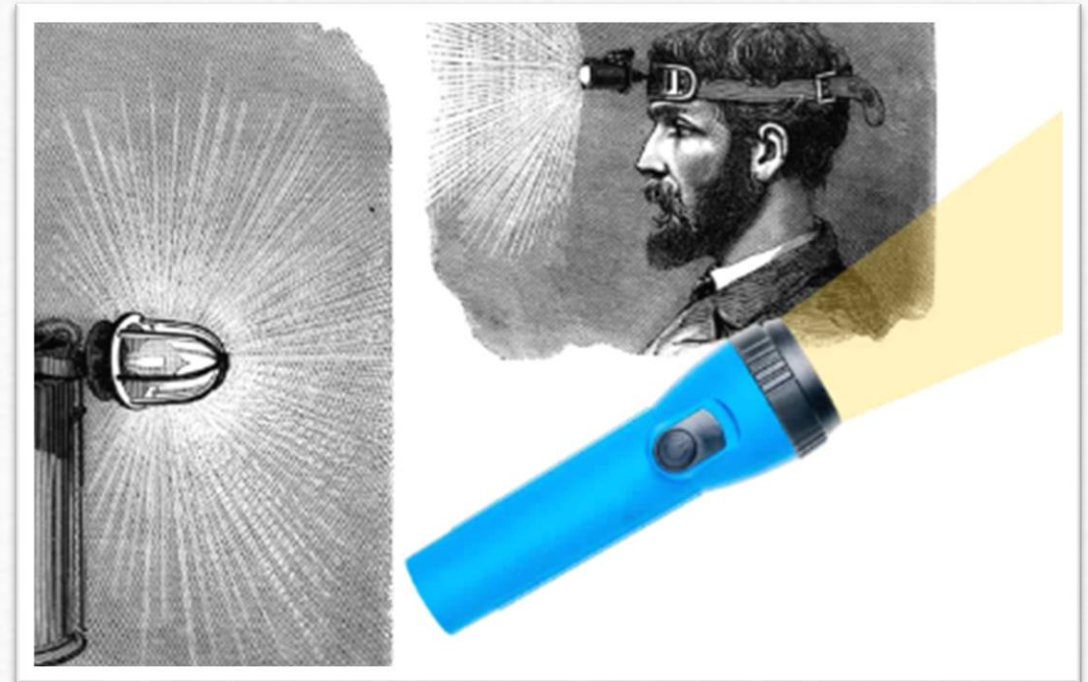
- Drawing
- Power prints





Design and Technology

- Electrical Systems- Torches
- Switch
- Circuit



Computing

- Creating Media
- Audio Production
- Audacity





PSHE

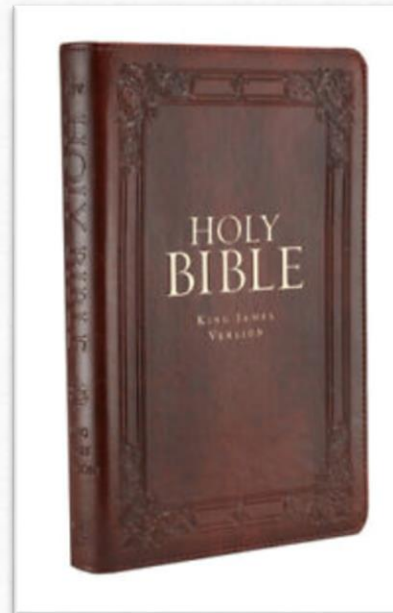
- Topic: Celebrating Difference
- Acceptance others for who they are
- Parents and carers can find copies of the letters regarding the PSHE curriculum, and about the books used in PSHE Read Aloud, on the school website.





Religious Education (RE)

- What is special to me and people in my community?
- Christianity
- The Bible



Autumn 2 - RE

*Why is the Bible
special for
Christian
people?*

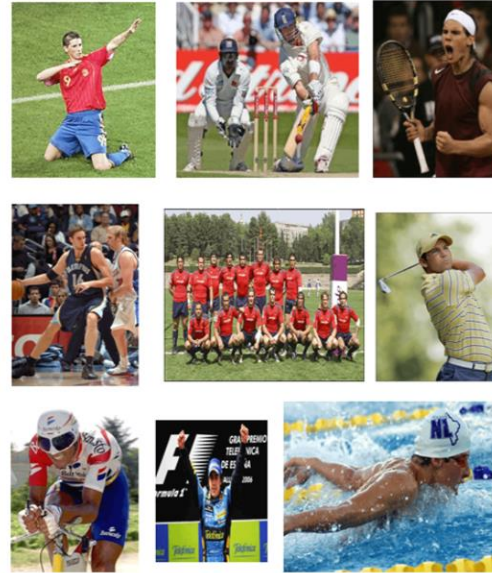




Spanish

- Schools and free time activities
- Sports

Los deportes





Physical Education

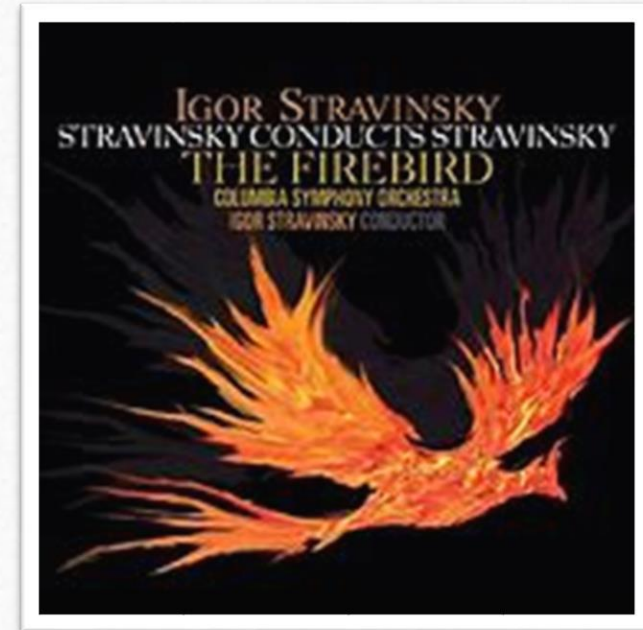
- PE Days - Tuesday and Wednesday
- Indoor and outdoor athletics
- CT and PE teacher





Music

- Specialist Teacher
- The Firebird and Petrushka
- Stravinsky





Key Events Coming Up This Year...

- Pira, Puma, SPaG, Arithmetic - Week 4 - Autumn 2
- Multiplication Tables Check - Summer Term
- Swimming (India will continue this half term until Tuesday 14th November and Tibet class will start on Tuesday 21st November until February 6th 2014)
- Visit to the British Museum - Autumn 2 - Augmented reality Anglo Saxons



Attendance and Safeguarding

- Punctuality and attendance are crucial - lessons start at 9:00am - remember soft start begins from 8:45am so families can arrive at school from this time.
- Safeguarding: Please do let the teacher know if your child has had an accident or has a mark or bruise. Please do not be offended when we ask about them.
- We expect pupils to make the most of every lesson - focus and attention are key (and we ensure the lessons are enjoyable and memorable).
- Please download the **MyEd App**. If you have concerns about attendance, please speak to Mr. Wedgbury or Mrs Tshuma.



Home Learning

- See home learning handout
- Posted on Teams (Year 4 Team)





Supporting Pupils at Home

- Please ensure that your child reads every evening (aim for 20 minutes). You can help by discussing the meaning of key words and asking questions about the book that your child is reading.
- Ensure that an adult has signed the child's reading record each day.
- Encourage your children to read a range of reading material - magazines, graphic novels, newspapers etc.
- Children also benefit from being read to.



Brampton Behaviour Policy

- We use BPS points, good news notes and celebration assemblies to reinforce positive behaviours and good work.
- We use a learning zone system in class for behaviour - consequences for not following the school rules include time out in another classroom and a blue letter home.
- Very poor behaviour at break or lunchtime may result in pupils being given a behaviour reflection - missing some of their lunch break with a member of SLT.



Class Worry Boxes

- Worry boxes provide a way for pupils to share any concerns or worries they have with their teacher - there is one in every classroom and these are checked regularly throughout the day.





Uniform & PE Kit

School Uniform

- Plain or school blue jumper, cardigan or fleece
- White school shirt, polo shirt or T-shirt
- Grey or black skirt, pinafore or trousers
- Blue and white checked dress
- White/navy blue/black headscarf
- Plain black shoes or trainers
- Black, grey or white socks or tights
- Preferably no jewellery - watch and stud earrings only
- An appropriate coat to keep your child warm and dry (any colour)

PE Kit

- No jewellery and no earrings (studs will need to be taped if kept in)
- Plain blue or school logo PE T-shirt
- Black trainers or plimsolls
- Black, grey or navy shorts in warm weather
- Plain black, grey or navy tracksuit bottoms in cold weather

(Pupils should come to school in their PE kit on their PE days)



Key Dates for Autumn 2

- Friday 10th November - Fairplay House meeting 9am and 3:30pm
- Wednesday 15th November - Parent Forum
- Wednesday 20th December - Last Day of Term (2pm finish time)
- Thursday 21st December - Wednesday 3rd January - Christmas Break
- Thursday 4th January - first day of term
- Thursday 4th January - Spring 1 Curriculum Meeting (3.30pm and 4pm)



Working Together

- The children make the best progress when there is a partnership between home and school, so...
 - Please support and reinforce the school's rules and expectations (behaviour, uniform, attitude etc.).
 - Do communicate any worries, queries, questions or concerns you might have - we want to help! First of all, please speak to your child's class teacher, then the year group leader and then a senior leader.
 - Email info@brampton.newham.sch.uk or see a member of the senior leadership team.



Volunteers

We are looking for parents and carers to volunteer to accompany classes on their educational visits.

We would like to create a bank of people who can be called on to support the school in ensuring all children are able to attend at least one educational visit each half term.

Parents and carers who are interested would be asked to complete a DBS as part of our safeguarding policy.



Any Questions?

-
- Please make sure you have signed out.