



**Year 2**  
**Curriculum Meeting for Parents  
and Carers**

---

Spring 1  
Key Information and Dates

# Who is working in Year 2?

## Belgium:

Ms Z Iqbal

## Italy:

Ms F Ahmed

## Spain:

Ms A Begum

## Poland:

Ms T Choudhury

## Classroom Practitioner:

Ms T Cable

## Year Group Leader:

Ms Z Iqbal

## Phase Leader:

Ms S Reay





# A Typical Day

---

## Mornings

- 8:45 - Soft Start (*Registers Close - 9:00*)
- 9:00 - Arithmetic/Handwriting/Library
- 9:30 - English
- 10:30 - Break
- 10:45 - Maths
- 11:45 - Lunch

## Afternoons

- 12.30 - Afternoon Registration and Assembly
- 12.45 - Take One Book
- 13:30 - Foundation subjects
- 14:15 - Foundation subjects
- 15.00 - Story
- 15.15 - Home time

**Our PPA Day will usually be on Wednesday**

# PPA (Specialist Teachers)



Mr Gillingham - Art



Ms Valverde - Spanish



Mr Kai - PE



Ms Calver - History  
and Geography

# Spring 1 Theme: Imagination and Make Believe

## Big Question: Can you imagine what it would be like to live somewhere in Asia?



### Rights Respecting Schools

Children's rights are learned, taught, practised, respected, protected and promoted.



### Personal Development

SMSC - spiritual, moral, social and cultural development.

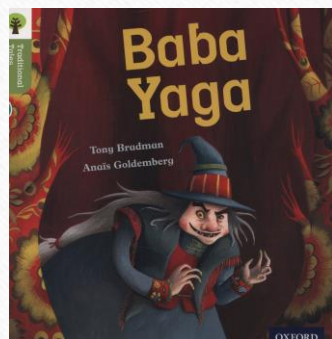


### Fundamental British Values

Democracy, individual liberty, rule of law, mutual respect and tolerance of different faiths and beliefs.

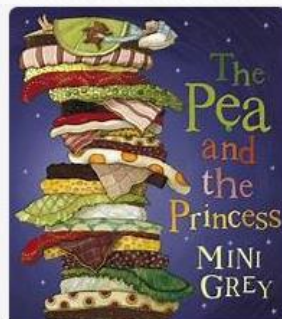
# English Texts

- English Lessons - Fairy Tales and Traditional Tales

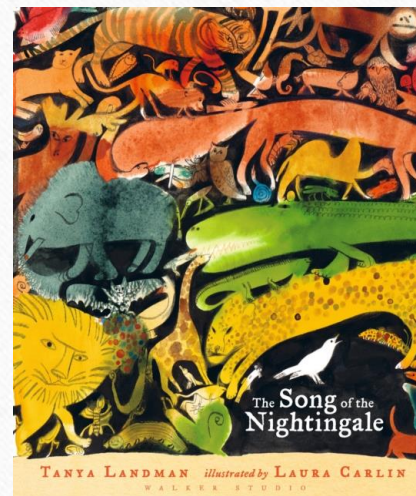


- Retelling

- Alternative ending



- Phonics/Take One Book



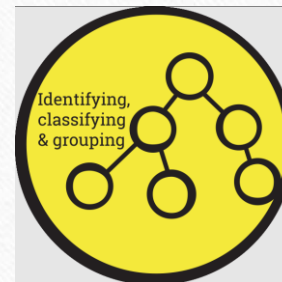


# Science – How Materials Can be Changed?



## Working scientifically skills:

- Identify and compare the suitability of a variety of everyday materials, including wood, metal, plastic, glass, brick, rock, paper and cardboard for particular uses.
- Find out how the shapes of solid objects made from some materials can be changed by squashing, bending, twisting and stretching.





Geography George



# Geography



Can you imagine what it would be like to live somewhere in Asia?

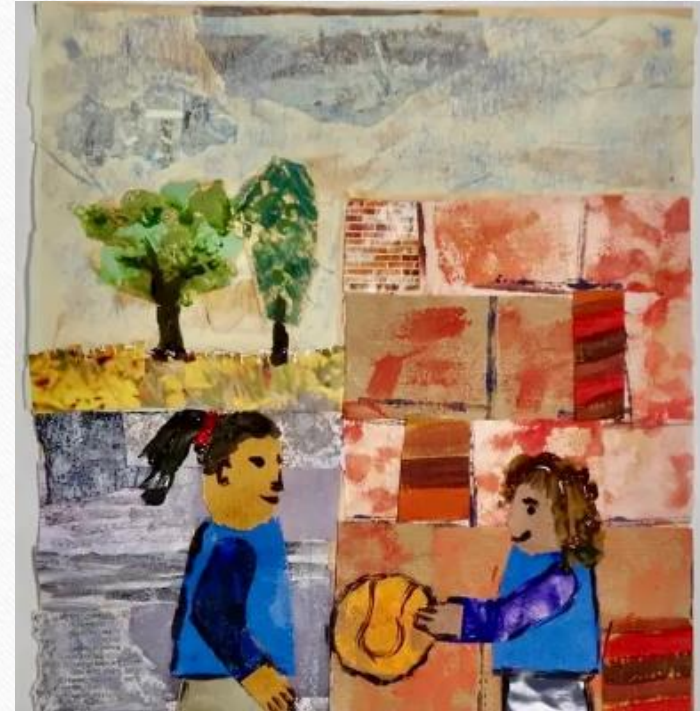
- Locational Knowledge: Considering capital cities of the UK and China.
- Place Knowledge: Understand geographical similarities and differences through studying the human and physical geography of a small area of the United Kingdom, and of a small area in a contrasting non-European country.
- Physical/Human Geography: To consider key physical and human features of both places.
- Geographical Skills: Using maps, atlases and globes to locate Beijing/London.





# Art and Design

- *Kapow Scheme of Work*
- Painting and Mixed Media : Life in colour
- Colour magic
- Texture Hunt
- Making Textures
- Collage Creation
- Developing Detail





# Design and Technology

- *Kapow Scheme of work*
- Textile - Pouches
- Running stitch
- Using a template
- Making a pouch
- Decorating a pouch

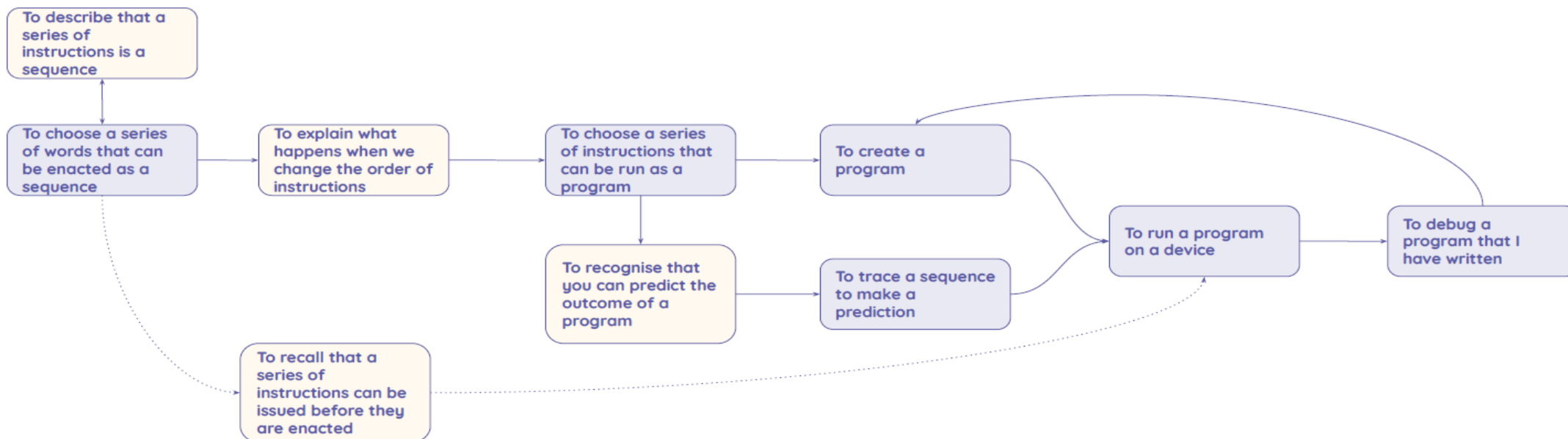




# Computing



- **NCCE Scheme of Work**
- **Robot Algorithms**



# PSHE

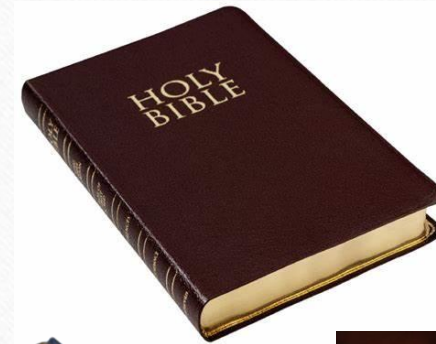


- Topic: Dreams and Goals
- Goals to success - children to be able to choose a realistic goal and think about how to achieve it.
- My learning strengths - I can persevere when I find tasks difficult
- Learning with others - recognising who I can work with easily and who I find difficult to work with.
- A group challenge - working cooperatively in a group to create an end product.
- Celebrating our achievement - knowing how to share success with other people.
- Parents and carers can find copies of the letters regarding the PSHE curriculum, and about the books used in PSHE Read Aloud, on the school website.



# Religious Education (RE)

- **Big Question: What can we learn from special stories**
- **Why are different books special for different people?**
- The children will be taught to:
  1. Why are some books more special than others?
  2. What holy books are special to us and why?
  3. Why is the Bible Special and for whom?
  4. What Is the Torah and why is it special?
  5. Why is the Qur'an a special book?
  6. What makes a book special for me?



# Spanish

- My house
- To learn parts of the house





# Physical Education

---

- PE Days - Tuesday and Wednesday
- Class teacher - Dance - explorers
- PE teacher - Gymnastics - linking







# Music

- 
- Marching and Walking
  - Music for Different Moods





# Key Events Coming Up This Year...

---

## Educational Visits

- National Army Museum

Thursday 8<sup>th</sup> February 2023 - Poland and Spain

Friday 9<sup>th</sup> February 2023 - Belgium and Italy



# Home Learning

---

- Each child should read at home every day for at least 10-15 minutes. **They** record this at least 5x a week in the reading records.
- The children will bring home their RWI spelling log book that contains spellings that the individual child needs to rehearse (words that the child is struggling with).
- 10 spellings will be sent home each week from the National Curriculum. They will be tested on these spellings in the following week.
- Online Times Tables Rock Stars (TTRS) activities - *Focus on x2, x5 and x10*
- **Optional:** Half termly project based on the whole school theme for the half term and the year group 'big question'.



# Supporting Pupils at Home

---

- Please ensure that your child reads every evening (aim for 20 minutes). You can help by discussing the meaning of key words and asking questions about the book that your child is reading.
- Ensure that an adult has signed the child's reading record each day.
- Encourage your children to read a range of reading material - magazines, graphic novels, newspapers etc.
- Children also benefit from being read to.



# Any Questions?

---