



**Year 4**  
**Curriculum Meeting for Parents and Carers**

---

Spring 1  
Key Information and Dates

---

**Please make sure you  
have signed in.**

## Who is working in Year 4?

Ms Rizwana Qureshi

*Year Group Leader*

*Bangladesh*

Ms Shamima Begum

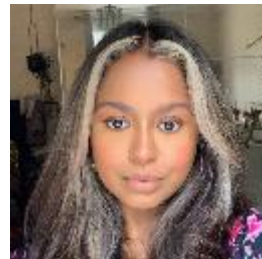
*China*

Mr Stephen Lambert

*India*

Ms Hafiza Kasu

*Tibet*





# A Typical Day

---

## Mornings

- 8:45 - Soft Start (*Registers Close - 9:00*)
- 9:00 - Maths
- 10:00 - English
- 11:00 - Assembly
- 11:15- Break
- 11:30 - Handwriting
- 12:00 - Take One Book
- 12:30 - LUNCH

## Afternoons

- 13.15 - Science
- 14.15 - D&T
- 15.15 - Home time

**Our PPA Day will usually be on Wednesday. This is when children will be taught a range of specialist subjects: geography/history, PE, art and design and Spanish.**

# Week A & Week B timetable

		R. Qureshi			Bangladesh - Week A						
	Soft start	9	10	11	12	13	14	15			
<b>M</b>	Soft start	Maths	English	A	Break	Take One Book	Library	Lunch	Science	Computing	
<b>T</b>	Soft start	Maths	English	A	Break	Take One Book	Story	Lunch	Take One Book	RWI Spelling	PE
<b>W</b>	Soft start	Art	A	Break	Geography/History	Lunch	PE	Spanish			
<b>T</b>	Soft start	Music <small>Mr Goodey</small>	Take One Book <small>Mrs Begum</small>	Geog/Hist	A	Break	Maths	Lunch	English	Arithmetic	
<b>F</b>	Soft start	Maths	English	A	Break	Take One Book	RWI Spelling	Lunch	RE	PSHE	

		R. Qureshi			Bangladesh - Week B					
	Soft start	9	10	11	12	13	14	15		
<b>M</b>	Soft start	Maths	English	A	Break	Take One Book	Library	Lunch	Science	Computing
<b>T</b>	Soft start	Maths	English	A	Break	Take One Book	Handw	Lunch	Science	PE
<b>W</b>	Soft start	Maths	English	A	Break	Take One Book	RWI Spelling	Lunch	Science	PE
<b>T</b>	Soft start	Music <small>Mr Goodey</small>	DT <small>Mrs Begum</small>	A	Break	Maths	Lunch	English	Arithmetic	
<b>F</b>	Soft start	Maths	English	A	Break	Take One Book	RWI Spelling	Lunch	RE	PSHE

# PPA (Specialist Teachers)

---



Mr Gillingham - Art



Ms Valverde - Spanish



Mr Kai - PE



Ms Calver - History  
and Geography

# Spring 1 Theme: Imagination and Make Believe

**Big Question:** What did the people of the Mayan civilisation believe?



## Rights Respecting Schools

Children's rights are learned, taught, practised, respected, protected and promoted.



## Personal Development

SMSC - spiritual, moral, social and cultural development.



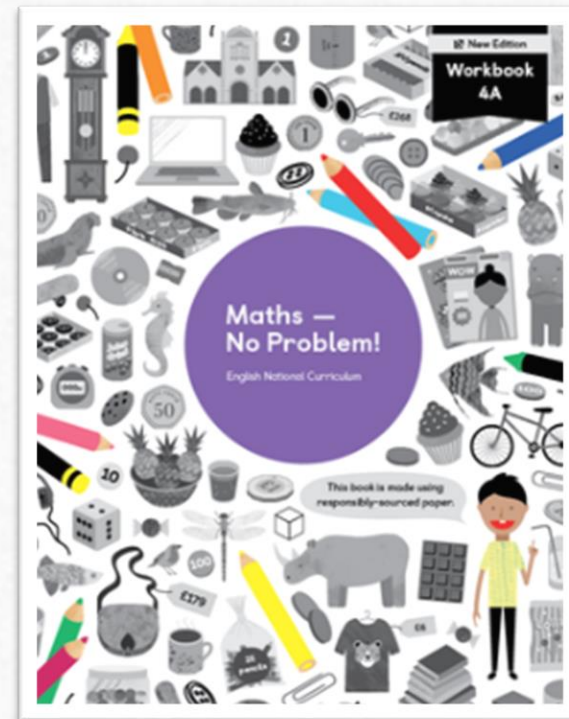
## Fundamental British Values

Democracy, individual liberty, rule of law, mutual respect and tolerance of different faiths and beliefs.



# Maths

- Continue with Chapter 6 - Fractions
- Chapters 4 - Further Multiplication and Division
- Parent access

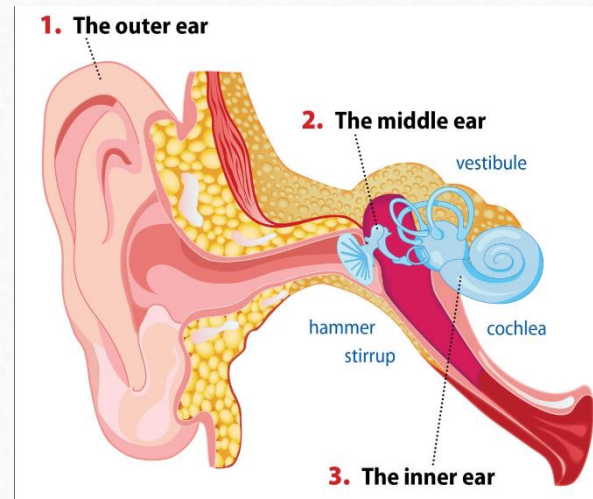






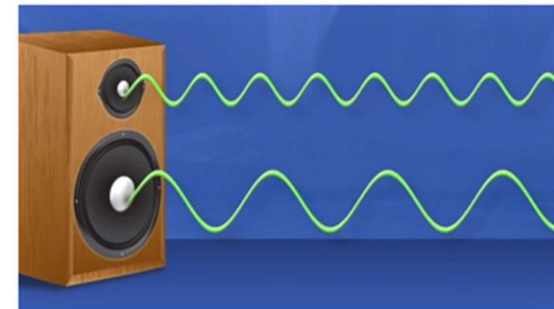
# Science

- Sound
- Identify
- Recognise
- Find patterns



Spring 1- Science

## *Sound*





# History

- What did the people of the Mayan civilisation believe?
- Hierarchy - Mayan society
- Inventions
- Achievements
- God - beliefs



Spring 1- History

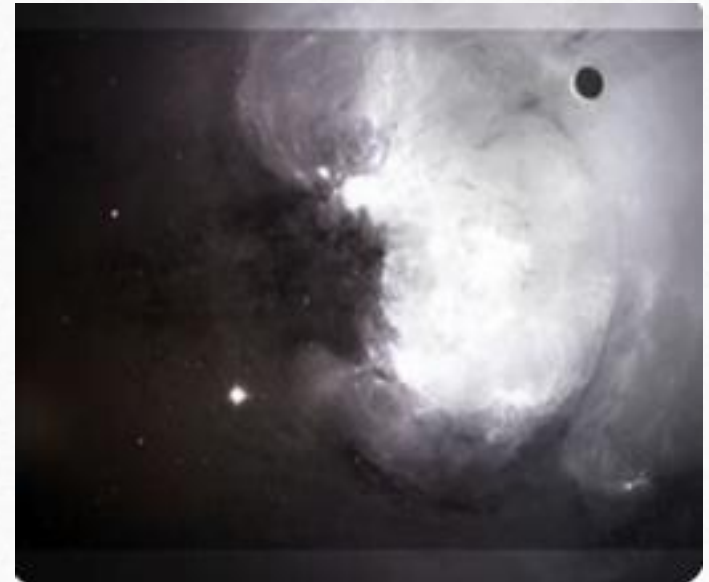
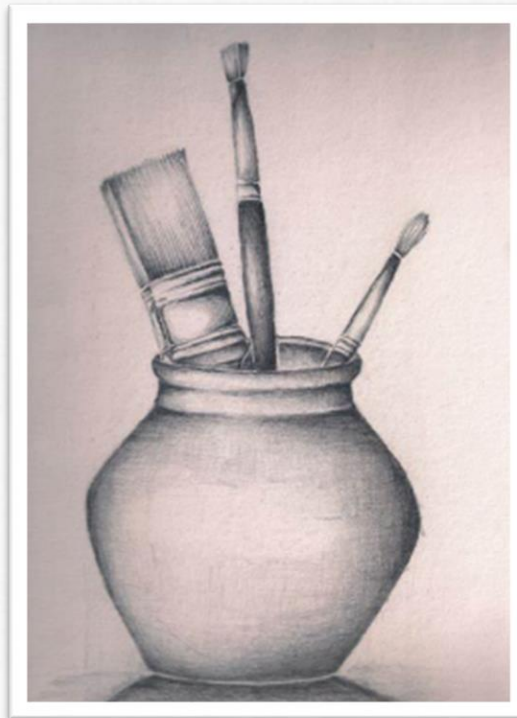
## *Mayan Civilisation*





# Art and Design

- Painting and Mixed Media
- Light and Dark





# Design and Technology

- Digital World - Mindful Moments
- Design
- Make
- Evaluate



Spring 1- D&T

*Digital World-  
Mindful  
moments  
timer*

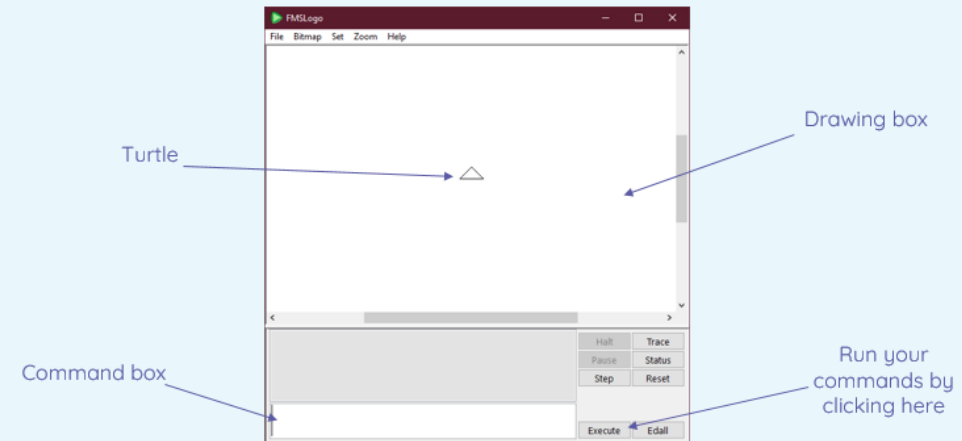




# Computing

- Programming
- Repetition in shapes
- Logo
- Coding

The Logo interface





# PSHE

- Topic: Dreams and Goals
- Hopes and dreams
- Disappointments and creating new dreams
- Parents and carers can find copies of the letters regarding the PSHE curriculum, and about the books used in PSHE Read Aloud, on the school website.





# Religious Education (RE)

- What is special to me and people in my community?
- What makes me the person I am?
- Describe and make links to stories
- Compare different religions and stories

Spring 1- RE

*What makes  
me the person*

*I am?* 



# Spanish

- Spanish cities
- Spanish monuments







# Physical Education

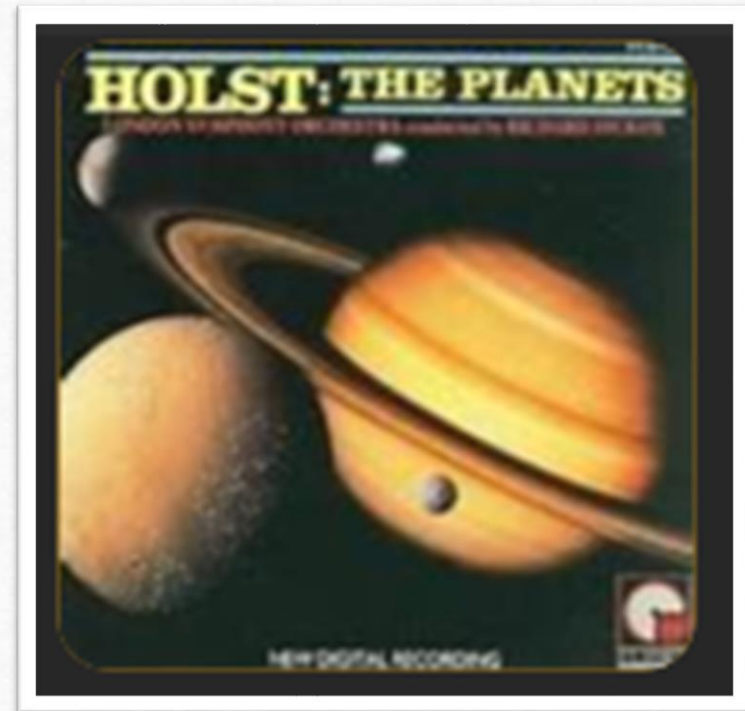
- PE Days - Tuesday and Wednesday
- Indoor and outdoor athletics
- CT and PE teacher
- Rowing
- Gymnastics





# Music

- Specialist Teacher
- Music and Mythology
- The Planets by Gustav Holst





# Key Events Coming Up This Year...

---

- Visit to the Science Museum - Turn it up and Wonderlab
- Swimming (Tibet will continue this half term until Tuesday 30<sup>th</sup> January and China class will start on Tuesday 6<sup>th</sup> February until Tuesday 16<sup>th</sup> April 2024)
- Fairplay House - 29<sup>th</sup> January - 31<sup>st</sup> January 2024
- Multiplication Tables Check - Summer Term



# Attendance and Safeguarding

---

- Punctuality and attendance are crucial - lessons start at 9:00am - remember soft start begins from 8:45am so families can arrive at school from this time.
- Safeguarding: Please do let the teacher know if your child has had an accident or has a mark or bruise. Please do not be offended when we ask about them.
- We expect pupils to make the most of every lesson - focus and attention are key (and we ensure the lessons are enjoyable and memorable).
- Please download the **MyEd App**. If you have concerns about attendance, please speak to Mrs Fordham or Mrs Tshuma.



# Home Learning

---

- Posted on Teams (Year 4 Team)





# Supporting Pupils at Home

---

- Please ensure that your child reads every evening (aim for 20 minutes). You can help by discussing the meaning of key words and asking questions about the book that your child is reading.
- Ensure that an adult has signed the child's reading record each day.
- Encourage your children to read a range of reading material - magazines, graphic novels, newspapers etc.
- Children also benefit from being read to.



# Brampton Behaviour Policy

---

- We use BPS points, good news notes and celebration assemblies to reinforce positive behaviours and good work.
- We use a learning zone system in class for behaviour - consequences for not following the school rules include time out in another classroom and a blue letter home.
- Very poor behaviour at break or lunchtime may result in pupils being given a behaviour reflection - missing some of their lunch break with a member of SLT.



# Class Worry Boxes

- Worry boxes provide a way for pupils to share any concerns or worries they have with their teacher - there is one in every classroom and these are checked regularly throughout the day.







# Uniform & PE Kit

---

## School Uniform

- Plain or school blue jumper, cardigan or fleece
- White school shirt, polo shirt or T-shirt
- Grey or black skirt, pinafore or trousers
- Blue and white checked dress
- White/navy blue/black headscarf
- Plain black shoes or trainers
- Black, grey or white socks or tights
- Preferably no jewellery - watch and stud earrings only
- An appropriate coat to keep your child warm and dry (any colour)

## PE Kit

- No jewellery and no earrings (studs will need to be taped if kept in)
- Plain blue or school logo PE T-shirt
- Black trainers or plimsolls
- Black, grey or navy shorts in warm weather
- Plain black, grey or navy tracksuit bottoms in cold weather

*(Pupils should come to school in their PE kit on their PE days)*



# Key Dates for Autumn 2

---

- Friday 9<sup>th</sup> February - Parent Forum
- Friday 9<sup>th</sup> February - Last Day of Term
- Monday 12<sup>th</sup> February - Friday 16<sup>th</sup> February - Half term break
- Monday 19<sup>th</sup> February - first day of term
- Thursday 18<sup>th</sup> April - Spring 2 Curriculum Meeting (3.30pm and 4pm)



# Working Together

---

- The children make the best progress when there is a partnership between home and school, so...
  - Please support and reinforce the school's rules and expectations (behaviour, uniform, attitude etc.).
  - Do communicate any worries, queries, questions or concerns you might have - we want to help! First of all, please speak to your child's class teacher, then the year group leader and then a senior leader.
  - Email [info@brampton.newham.sch.uk](mailto:info@brampton.newham.sch.uk) or see a member of the senior leadership team.



# Volunteers

---

We are looking for parents and carers to volunteer to accompany classes on their educational visits.

We would like to create a bank of people who can be called on to support the school in ensuring all children are able to attend at least one educational visit each half term.

Parents and carers who are interested would be asked to complete a DBS as part of our safeguarding policy.



# Any Questions?

- 
- Please make sure you have signed out.